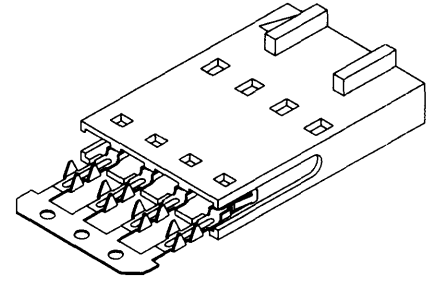


**molex® 2.54mm (.100") Pitch
SL™**

FFC/FPC Connector

70430

**Single Row, Female
Version C**



FEATURES AND SPECIFICATIONS

Features and Benefits

- Sizes 2 to 25 circuits
- Front polarizing ribs prevent pin damage during disconnect, housing cannot be twisted off pins
- Piercing crimp provides 3 high-pressure interfaces with the conductor
- Terminals preloaded into housing

Reference Information

Product Specification: PS-40556
 Packaging: Tube
 Tooling Information: See end of section
 UL File No.: E29179
 CSA File No.: LR19980
 Mates With: 70544, 70546 straight and 70554, 70556 right angle polarized headers
 Designed In: Inches

Electrical

Voltage: 250V
 Current: 2.0A (for Copper conductors)
 Contact Resistance: 10mΩ max.
 Dielectric Withstanding Voltage: 1500V
 Insulation Resistance: 1000 MΩ min.

Mechanical

Contact Retention to Housing: 13.34N (3 lb) min.
 Mating Force: 2.22N (.50 lb) max.
 Unmating Force: 0.28N (.06 lb) min.
 Wire Pull-Out Force: 26.69N (6 lb)
 Durability: Tin/Lead—25 cycles max.
 Gold—50 cycles max.

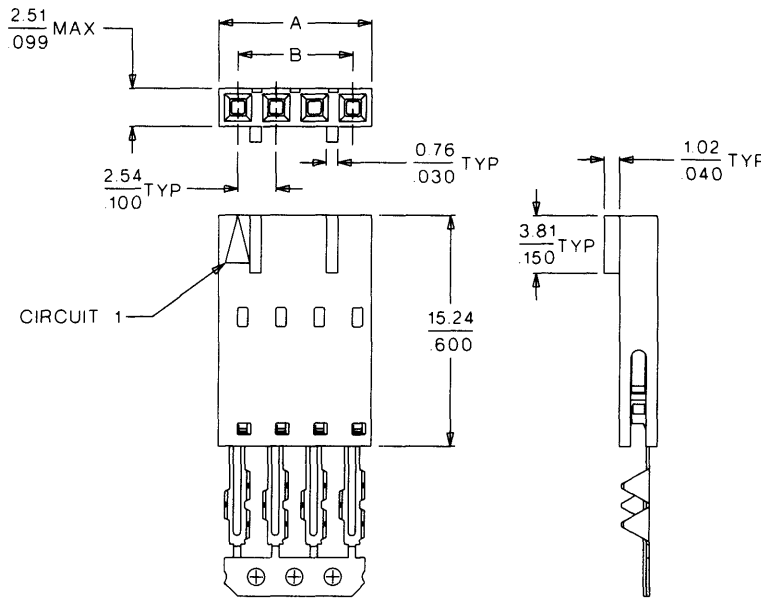
Physical

Housing: Polyester, UL 94V-0
 Contact: Phosphor Bronze
 Plating: See Table
 Operating Temperature: -40 to +105°C

FFC/FPC Connectors



CATALOG DRAWING (FOR REFERENCE ONLY)



ORDERING INFORMATION AND DIMENSIONS

Circuits	Order No.			Dimension	
	15μ" Gold	30μ" Gold	150μ" Tin/lead	A	B
2	15-47-4021	15-47-4025	15-38-8027	5.05 (.199)	2.54 (.100)
3	15-47-4031	15-47-4035	15-38-8037	7.59 (.299)	5.08 (.200)
4	15-47-4041	15-47-4045	15-38-8047	10.13 (.399)	7.62 (.300)
5	15-47-4051	15-47-4055	15-38-8057	12.67 (.499)	10.16 (.400)
6	15-47-4061	15-47-4065	15-38-8067	15.21 (.599)	12.70 (.500)
7	15-47-4071	15-47-4075	15-38-8077	17.75 (.699)	15.24 (.600)
8	15-47-4081	15-47-4085	15-38-8087	20.29 (.799)	17.78 (.700)
9	15-47-4091	15-47-4095	15-38-8097	22.83 (.899)	20.32 (.800)
10	15-47-4101	15-47-4105	15-38-8107	25.37 (.999)	22.86 (.900)
11	15-47-4111	15-47-4115	15-38-8117	27.91 (1.099)	25.40 (1.000)
12	15-47-4121	15-47-4125	15-38-8127	30.45 (1.199)	27.94 (1.100)
13	15-47-4131	15-47-4135	15-38-8137	32.99 (1.299)	30.48 (1.200)

Circuits	Order No.			Dimension	
	15μ" Gold	30μ" Gold	150μ" Tin/lead	A	B
14	15-47-4141	15-47-4145	15-38-8147	35.53 (1.399)	33.02 (1.300)
15	15-47-4151	15-47-4155	15-38-8157	38.07 (1.499)	35.56 (1.400)
16	15-47-4161	15-47-4165	15-38-8167	40.61 (1.599)	38.10 (1.500)
17	15-47-4171	15-47-4175	15-38-8177	43.15 (1.699)	40.64 (1.600)
18	15-47-4181	15-47-4185	15-38-8187	45.69 (1.799)	43.18 (1.700)
19	15-47-4191	15-47-4195	15-38-8197	48.23 (1.899)	45.72 (1.800)
20	15-47-4201	15-47-4205	15-38-8207	50.77 (1.999)	48.26 (1.900)
21	15-47-4211	15-47-4215	15-38-8217	53.31 (2.099)	50.80 (2.000)
22	15-47-4221	15-47-4225	15-38-8227	55.85 (2.199)	53.34 (2.100)
23	15-47-4231	15-47-4235	15-38-8237	58.39 (2.299)	55.88 (2.200)
24	15-47-4241	15-47-4245	15-38-8247	60.93 (2.399)	58.42 (2.300)
25	15-47-4251	15-47-4255	15-38-8257	63.47 (2.499)	60.96 (2.400)